

HUDSON JAMES

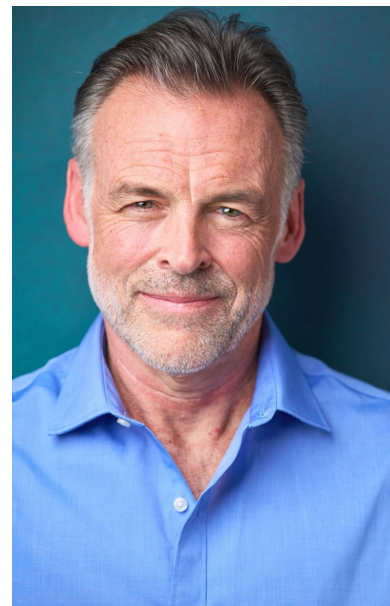
Lifestyle Model | Commercial Actor

Former EPA GS-15 Executive | Public Speaker

6'1" | 190 lbs | Hazel Eyes | Salt & Pepper Hair

Cincinnati, OH | Fort Lauderdale, FL

Available Nationwide



COMMERCIAL CREDITS

Carpe Diem Thoroughbred Stud Campaign - Principal Speaking Role

People's Bank - Principal Talent

BMW Germain Naples - Principal Talent

PRINT CREDITS

Philips Respironics - Principal Package Cover Model

Cintas - Catalog Cover Model

Aflac - Print Campaign

REPRESENTATION

Heyman Talent Agency (OH/KY/IN)

Stellar Model & Talent Agency (FL)

SPECIAL SKILLS

Teleprompter, On-Camera Speaking, Public Speaking, Federal Executive Leadership, Swimming, Fitness, Boating

Valid U.S. Passport, Available for Travel

BACKGROUND

Former EPA GS-15 executive with 32 years of leadership experience bringing authentic authority, professionalism, and relatable life experience to commercial, healthcare, financial, travel, hospitality, and executive or authority-based roles.